

Microwavefilters® &

Microwave components for telecommunication systems

WR 112
8.0 ÷ 8.4 GHz
Bandpass Filter



Very Low IL (~0.2 dB across passband)
GD Variation < 2 ns in BW
Weatherproof for Outdoor Use (IP65)

Microwavefilters & TVC srl

Via G. Cavalcanti, 10 - 20063 Cernusco s/N (MI) - ITALY
Tel. +39-02-92162703 Fax. +39-02-92162705

info@mw-tvc.com www.mw-tvc.com

Microwave components for telecommunication systems

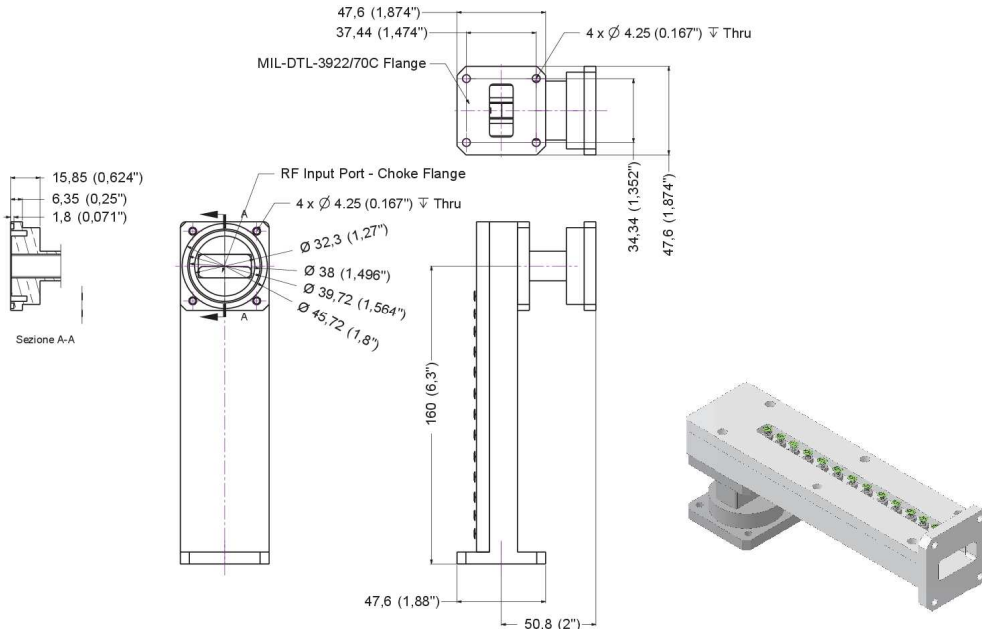
MW&TVC presents a new bandpass filter at 8 GHz, with very low IL (< 0.2 dB across passband) and very high RL (> 23.1 dB that is VSWR 1.15: 1 max.). Group delay is quite flat, with variation < 2 ns across the passband. This filter is for outdoor use (IP65, weatherproof).

Parameter	Value
Part Number	MW-F08200-FFT
Passband	8.00 ÷ 8.40 GHz (400 MHz)
Nominal 3dB Bandwidth	450 MHz
Return Loss	≥ 23.1 dB
VSWR	1.15: 1 max.
Insertion Loss	≤ 0.2 dB across passband
Rejection at 7.660 GHz	≥ 45 dB
Rejection at 9.092 GHz	≥ 45 dB
Group Delay	≤ 2 ns btw 8÷8.05 GHz and 8.35÷8.4 GHz ≤ 1 ns over 100 MHz segment between 8.05 ÷ 8.35 GHz
Phase Matching	± 5° across passband, unit to unit
Operating Temperature	-55 °C ÷ +55 °C
Dimensions	See next page
Input / Output Flanges	1 MIL-DTL-3922/70C (flat) & 1 MIL-DTL-3922/59F (grooved, gasket Included)
Environment	Weatherproof for Outdoor Use

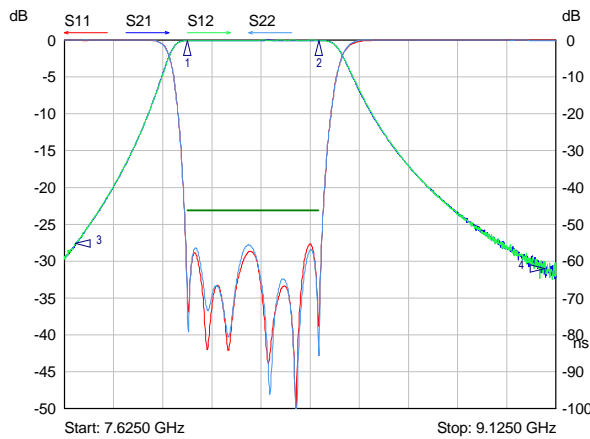
Microwavefilters® &

Microwave components for telecommunication systems

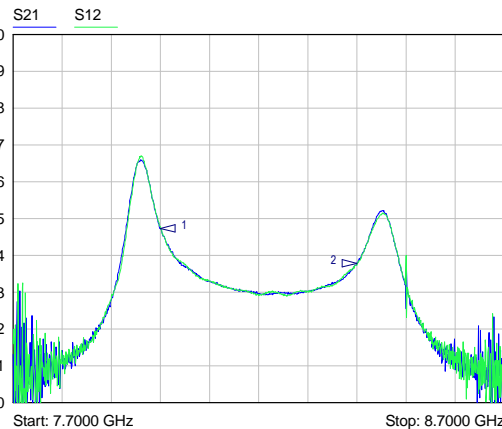
Mechanical Outline



Typical Frequency Responses



Mkr	Trace	X-Axis	Value	Notes
1	S21	8.0000 GHz	-0.18 dB	
2	S21	8.4000 GHz	-0.11 dB	
3	S21	7.6600 GHz	-55.25 dB	
4	S21	9.0920 GHz	-62.03 dB	



Mkr	Trace	X-Axis	Value	Notes
1	S21	8.0000 GHz	4.73 ns	
2	S21	8.4000 GHz	3.79 ns	